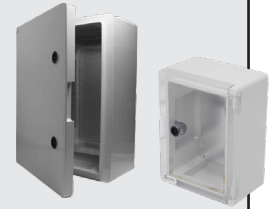


### ⚠ Important Safety Notice ⚠

It is the responsibility of the person installing the electrical equipment to ensure that the installation meets the requirements of the IET wiring regulations and is therefore 'fit for purpose'. Factors such as correct selection of components, cable sizing, protective devices and Earth bonding are all critical and should be checked prior to full testing and power-up. Any other regulations applicable to the equipment being installed such as the Machinery Directive and current health and safety legislation must also be adhered to. Terminals should be checked periodically to ensure correct tightness.



- ✓ RAL: 7035 / ✓ ABS Enclosure
- ✓ Clear Door Polycarbonate / ✓ Back Plate and Fixing Brackets Included

### ⓘ Europa Insulated ABS Enclosure Dimensions Table

Part number	External Dimensions			Internal Depth	Internal Height	Internal Width	Net Weight (Kg)	IK Rating	Other Information (GPTB = Gland Plate Top & Bottom)
	H (mm)	W (mm)	D (mm)	(also Mounting Plate Dimensions)					
				ID	H3 (mm)	W3 (mm)			
PBE2821013	280	210	130	108	230	150	1.32	IK10	1 △ Lock, No Glandplate
PBE2821013C									
PBE302513	300	250	130	108	250	190	1.58		
PBE302513C									
PBE332513	330	250	130	108	280	190	1.74		
PBE332513C									
PBE352515	350	250	150	128	300	190	1.94		
PBE352515C									
PBE353016	350	300	165	143	300	240	2.11		
PBE353016C									
PBE4030016	400	300	165	139	350	240	2.76	IK09	2 △ Locks, No Glandplate
PBE4030016C									
PBE403019	400	300	195	165	350	240	3.05		
PBE403019C									
PBE503519	500	350	195	168	450	288	4.00		
PBE503519C									
PBE504017	500	400	175	145	450	340	4.30		
PBE504017C									
PBE504024	500	400	245	205	450	340	4.84		
PBE504024C									
PBE604020	600	400	200	170	545	340	5.55		
PBE604020C									
PBE605022	600	500	220	185	530	445	7.28		
PBE605022C									
PBE705024	700	500	245	205	630	450	9.16		
PBE705024C									
PBE806026	800	600	260	225	725	540	12.57	3 △ Locks, No Glandplate	
PBE806026C									



\* key: = back plate

